



New Bedford's

# BLUE LANE

A coastal trail with an urban attitude.





The

# BLUE LANE

*A coastal trail with an urban attitude*

**How we developed a shared use path in a historic New England Port City with a diverse population, seasonal tourism, and minimal land...**

How did we garner community support, obtain easements, address design challenges and clean up brownfields to build a continuous trail network in a densely developed place?





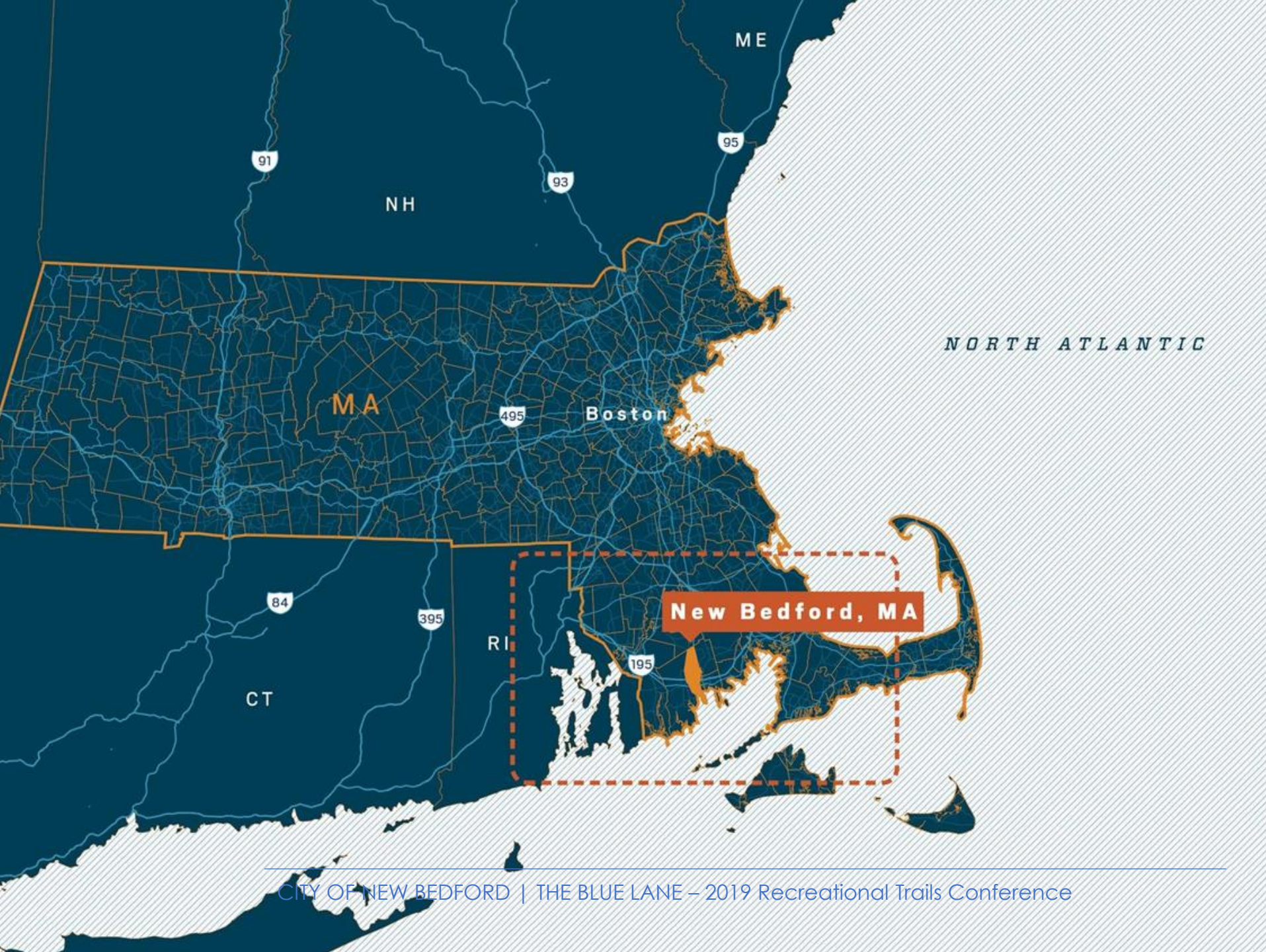




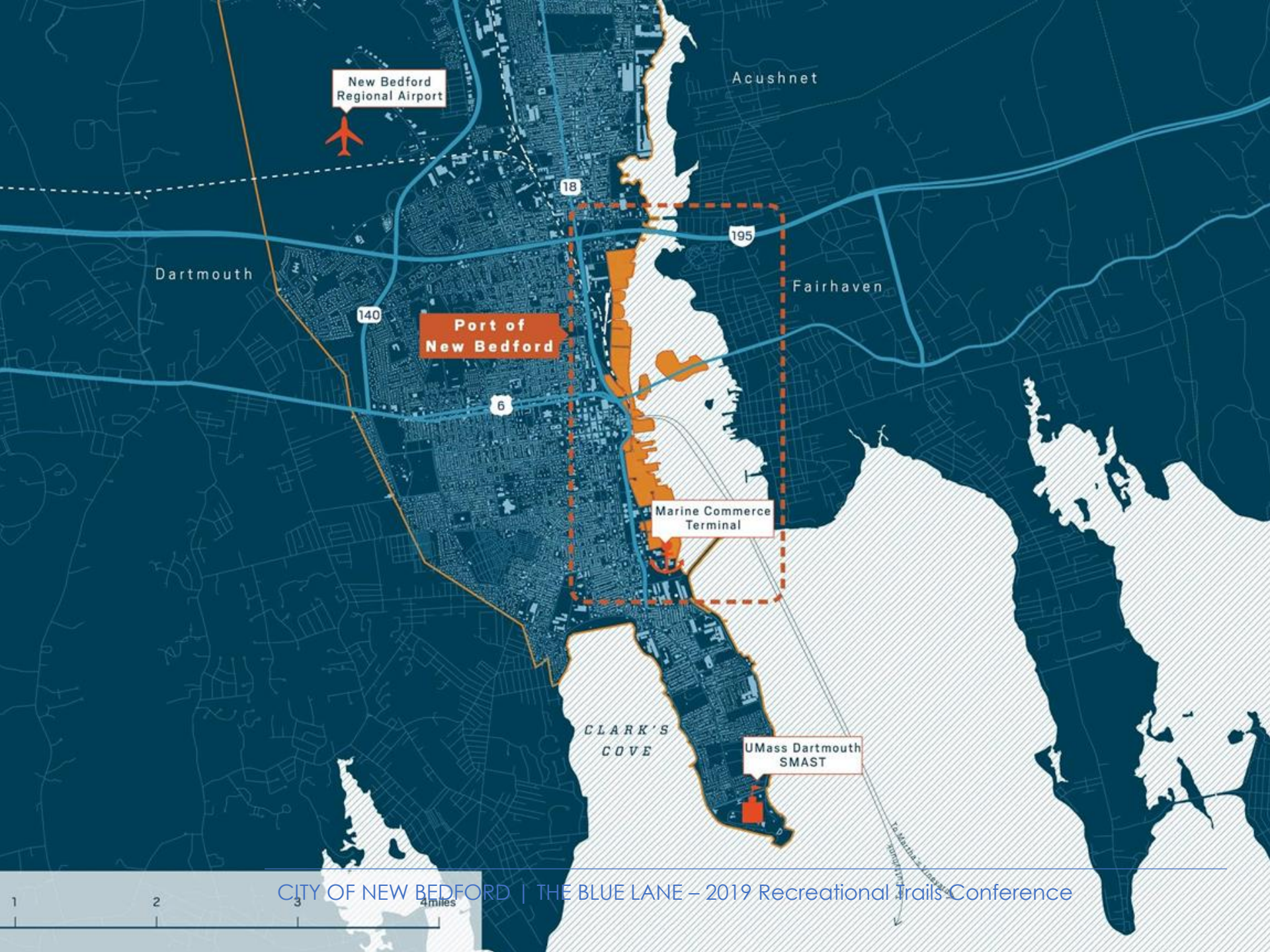


# OUR CITY









New Bedford  
Regional Airport

Acushnet

Dartmouth

Port of  
New Bedford

Fairhaven

Marine Commerce  
Terminal

CLARK'S  
COVE

UMass Dartmouth  
SMASST





# The City of New Bedford

A high quality of life, recreational opportunities, and a thriving economy make New Bedford the perfect place to call home.



- Diverse, vibrant year-round population of over 90,000
- World's most famous whaling era seaport and top fishing port in America
- Over 20 galleries and museums downtown, including the Zeiterion Performing Arts Center, New Bedford Whaling Museum, and the National Historical Park
- Over 26 acres of beaches, 12 miles of trails and bikeways, and 30 parks
- One of the National Trust for Historic Preservation's Distinctive Destinations in the US



# The Port of New Bedford

Port activities have historically served as the lifeblood of this coastal community, today our Port's success is driven by a firm belief in cross-sector collaboration and industry transparency, enabled by cooperation, innovation, and entrepreneurship in the maritime economy and beyond.

In 2018, commercial fishing/seafood processing activity in the New Bedford/Fairhaven Harbor generated 6,237 direct jobs including jobs with local shipyards, chandlers, engine/propulsion repair shops, retail stores, suppliers of fishing gear, insurance brokers, public restaurants, retail stores, and fish processing and cold storage operations

**Home to over 44 fish wholesale companies, 75 seafood processors, and 20 seafood production, preparation, and packaging companies-- #1 Fishing Port in America**







# BUILDING THE BLUE LANE



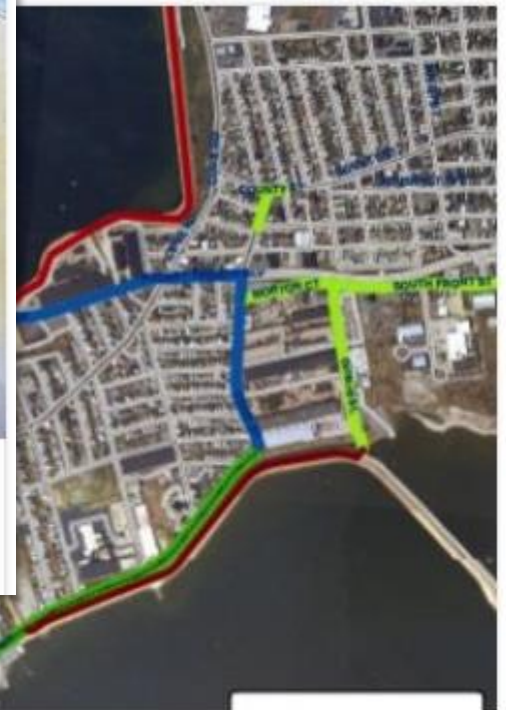






## NEW BEDFORD RECEIVES \$352,800 FOR HARBORWALK PROJECT

 Michael Silvia  December 4, 2012  Latest  2 Comments



## NEW BEDFORD SECURES FUNDING FOR CLARK'S COVE SECTION OF HURRICANE BARRIER PATHWAY

 NewBedfordGuide  April 14, 2016  Latest  Leave a comment



# DREAM



CITY OF NEW BEDFORD | THE BLUE LANE – 2019 Recreational Trails Conference

# REALITY







# THE BLUE LANE

CITY OF NEW BEDFORD, MA

*The Blue Lane is designed to showcase New Bedford's commitment to bicycle planning for public health and outdoor recreation. The Blue Lane's cohesive path allows for recreation along the city's waterfront and shorelines, and connects residents to the harbor and one another.*



## LEGEND

COMPLETE DESIGNATED ON-ROAD BIKE LANE

COMPLETE OFF-ROAD PATH

PLANNED OFF-ROAD PATH

PLANNED ENHANCEMENTS



PARKS

WATER

SEPTEMBER 2019



CITY OF NEW BEDFORD | THE BLUE LANE – 2019 Recreational Trails Conference





Assembling Right of Way







## Project Partners

FORT TABER STATION

**Zagster**  
**BIKE SHARE**

**READY TO RIDE?**

Download the free Zagster app  
or visit [zagster.com/newbedford](http://zagster.com/newbedford)

- Create an account
- Upload your photo
- Verify your identity
- Receive your bike
- Start riding now!

**HOW IT WORKS**

- 1 JOIN**  
Download the Zagster app and join the New Bedford bike share.
- 2 UNLOCK**  
Unlock a bike using your phone. For standard operations, click "New" to see the bike.
- 3 RIDE**  
Ride your bike along the water. Along the way, you'll see the bike's location and how much time you have left to ride.
- 4 RETURN & LOCK**  
When you're done riding, lock and return the bike to a designated station.

**We want your feedback!**

Scan QR code to give us your feedback.

**SPONSORED BY**

**INB new Bedford**  
Department of Public Works

**Harvard Pilgrim HealthCare**

[zagster.com/newbedford](http://zagster.com/newbedford)













# CELEBRATING THE BLUE LANE



VENDORS DEMOS GAMES  
SAFETY WORKSHOPS MUSIC FOOD

# BIKE NB

10AM TO 12PM

OCTOBER 5

WHALES TOOTH PARKING LOT  
532 ACUSHNET AVE

McARTHUR BLVD

3 MILE LOOP

5.5 MILE LOOP

10 MILE BLUE LANE



eliminating racism  
empowering women

ywca

AARP



Mass  
in Motion

Age  
You



CITY OF NEW BEDFORD | THE BLUE LANE – 2019 Recreational Trails Conference

## It's a beautiful way to the best of New Bedford

Cyclists take to the streets for Bike New Bedford

Kiernan Dunlop  
kdunlop@s-t.com

NEW BEDFORD — Cyclists of all ages and backgrounds took to the streets on Saturday for Bike New Bedford, an event that celebrated the city's status as a bicycle-friendly city. The dozens of cyclists were part of Bike New Bedford Day, an event organized by the city's Parks, Recreation & Beaches and Public Works departments, which provides the choice of guided or self-guided rides of varying lengths.

The rides started, led by Tabitha Harkin, a different project has taken on, the involvement of departments and the city to become a pedestrian-friendly city. Including the new CoveWalk, the creation of a new path on city streets, a grant from the waterfront. The waterfront benefits the city's economy, history, and the environment. "It's a beautiful way to see the city," Harkin said.



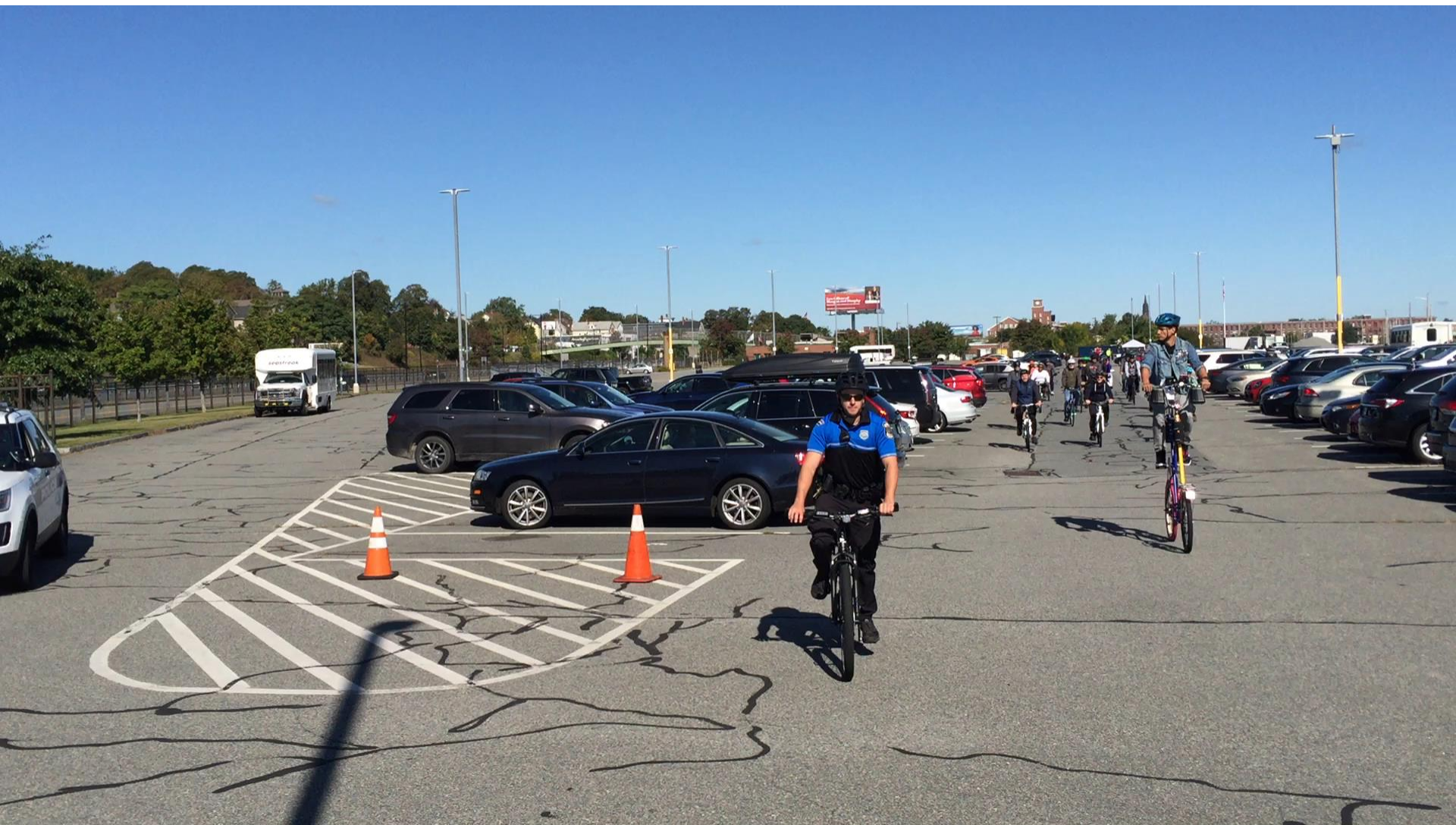
New Bedford City Planner Tabitha Harkin motions on Saturday in the Whale's Tooth parking lot



Members of the New Bedford Police Department family-friendly ride, Harkin motions past the waterfront. The ride goes by the waterfront, and the members of the department are riding.









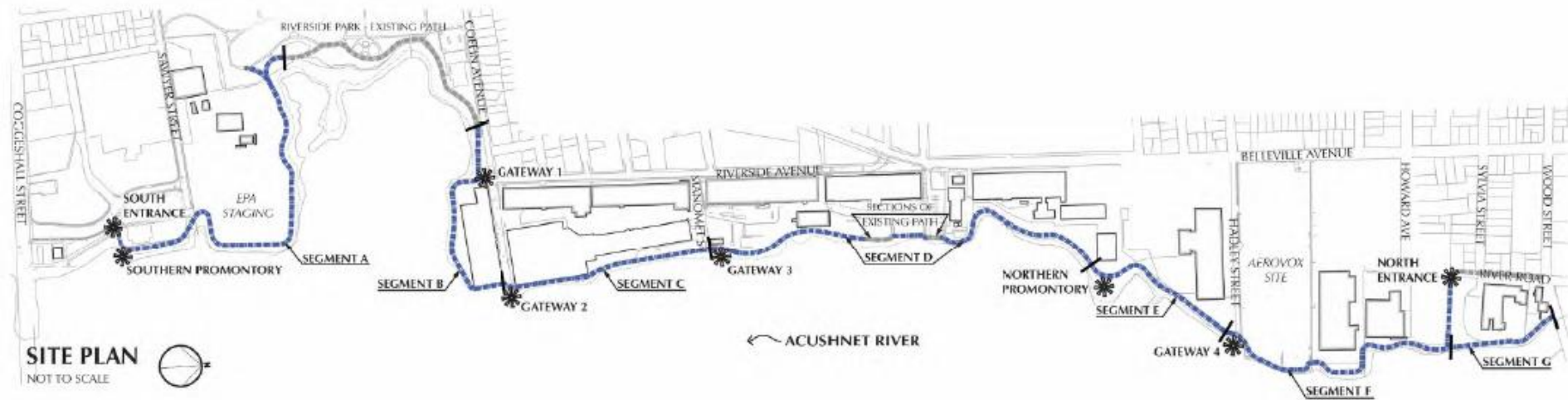


# NEXT STEPS



# RIVERWALK

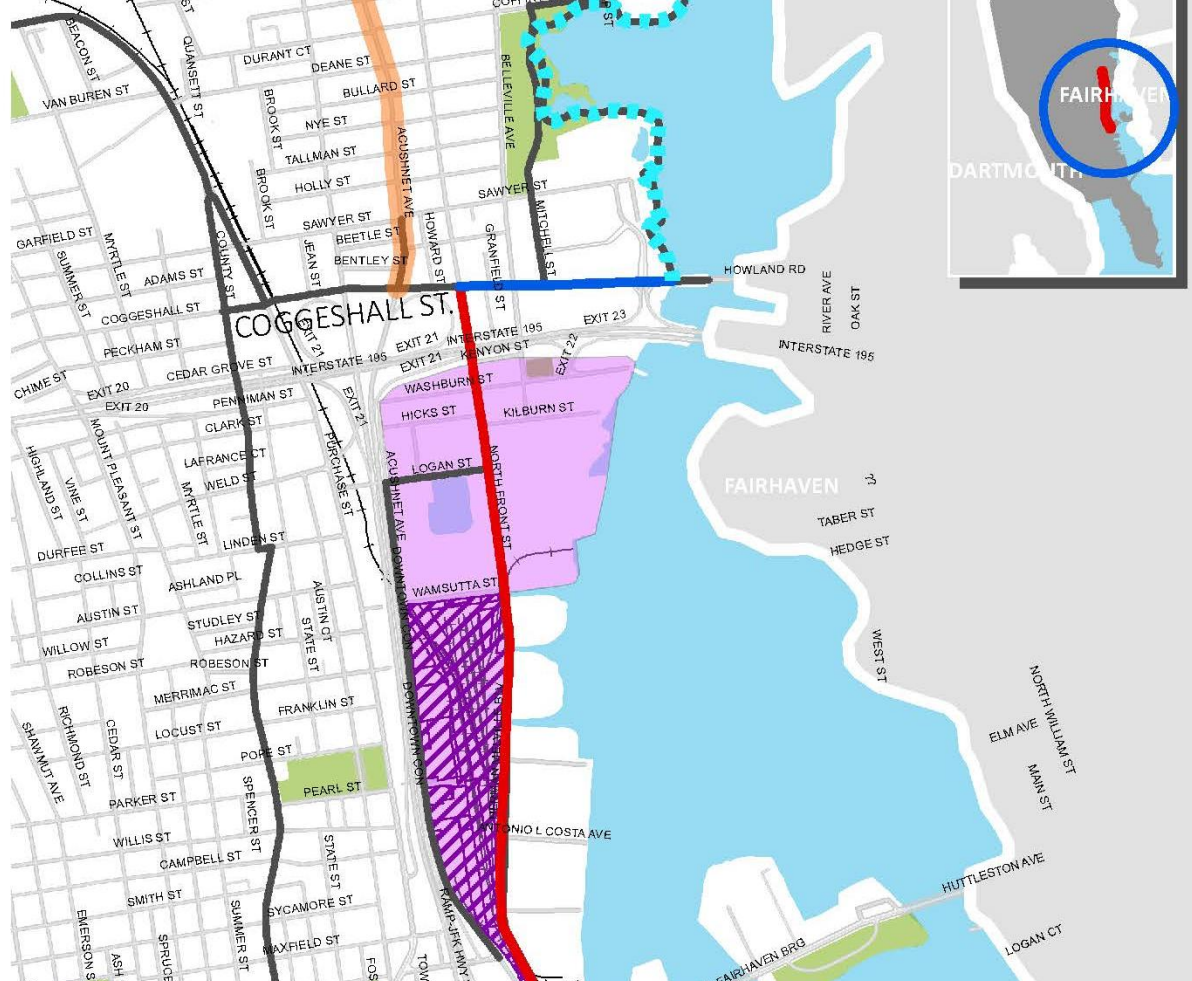
**\$670K coming for Riverwalk project in New Bedford**



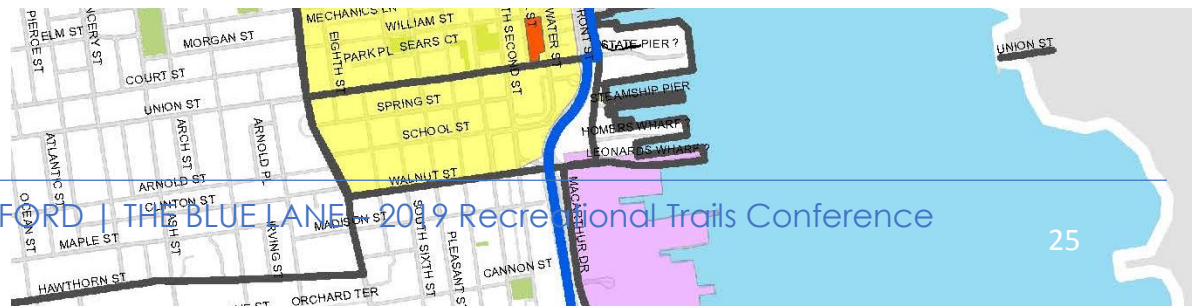




# WORKING WATERFRONT CONNECTOR



**New Bedford 'Blue Lane' project to receive \$35,000 MassTrails planning grant**

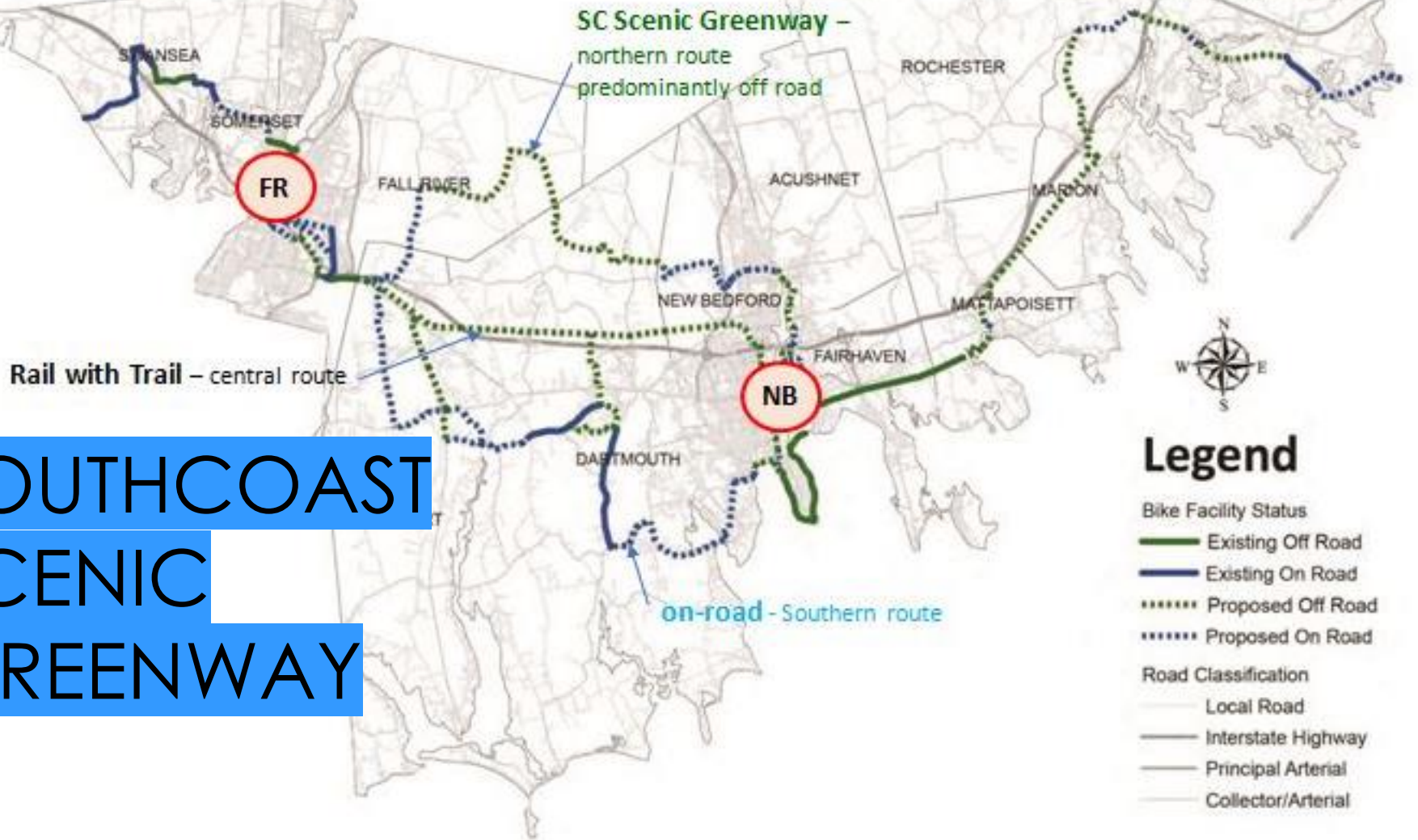


CITY OF NEW BEDFORD | THE BLUE LANE 2019 Recreational Trails Conference

Whale's Tooth Parcels

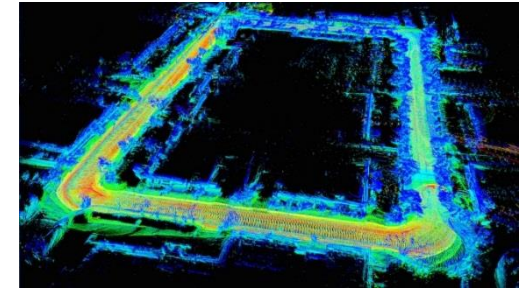
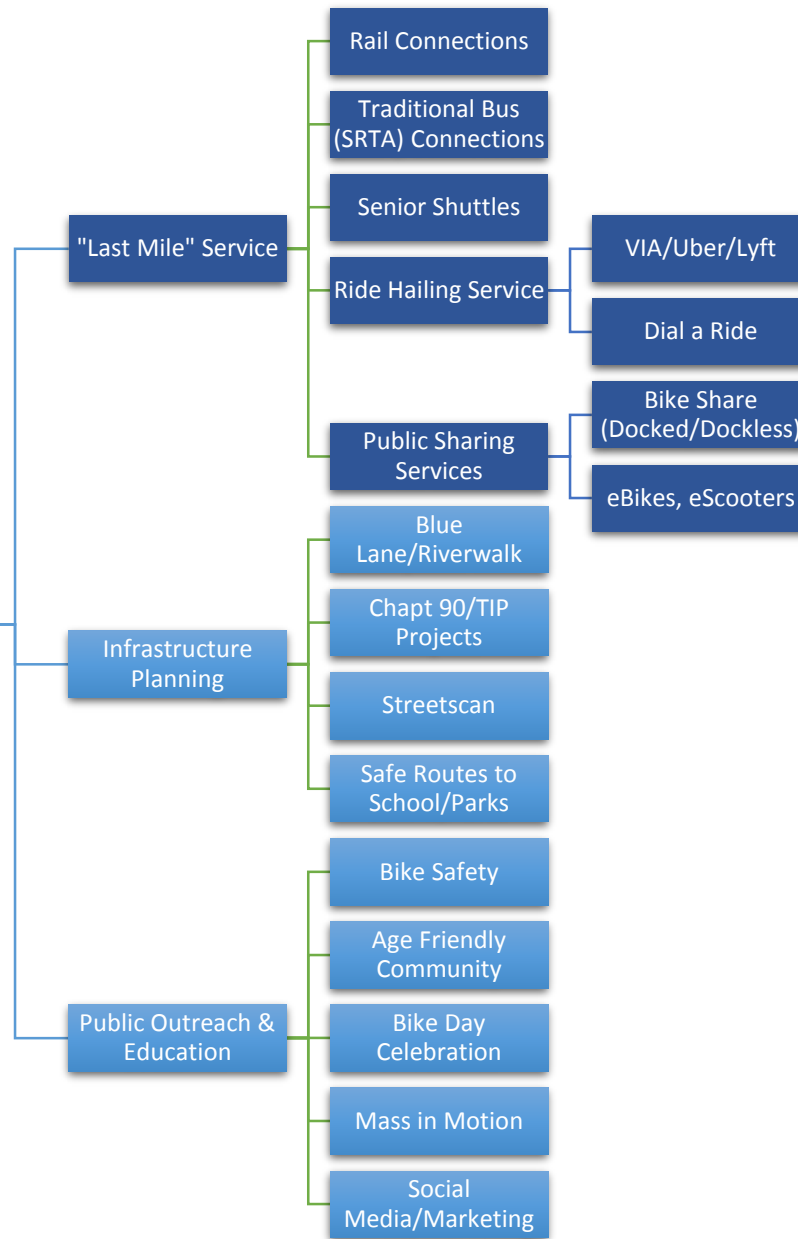


# South Coast Scenic Greenway





# NB Multimodal Mobility Plan





# CONTACT



Department of City Planning  
133 William St, 3rd Floor  
508-979-1488

Tabitha Harkin, LEED AP ND  
Director of City Planning  
[tabitha.harkin@newbedford-ma.gov](mailto:tabitha.harkin@newbedford-ma.gov)